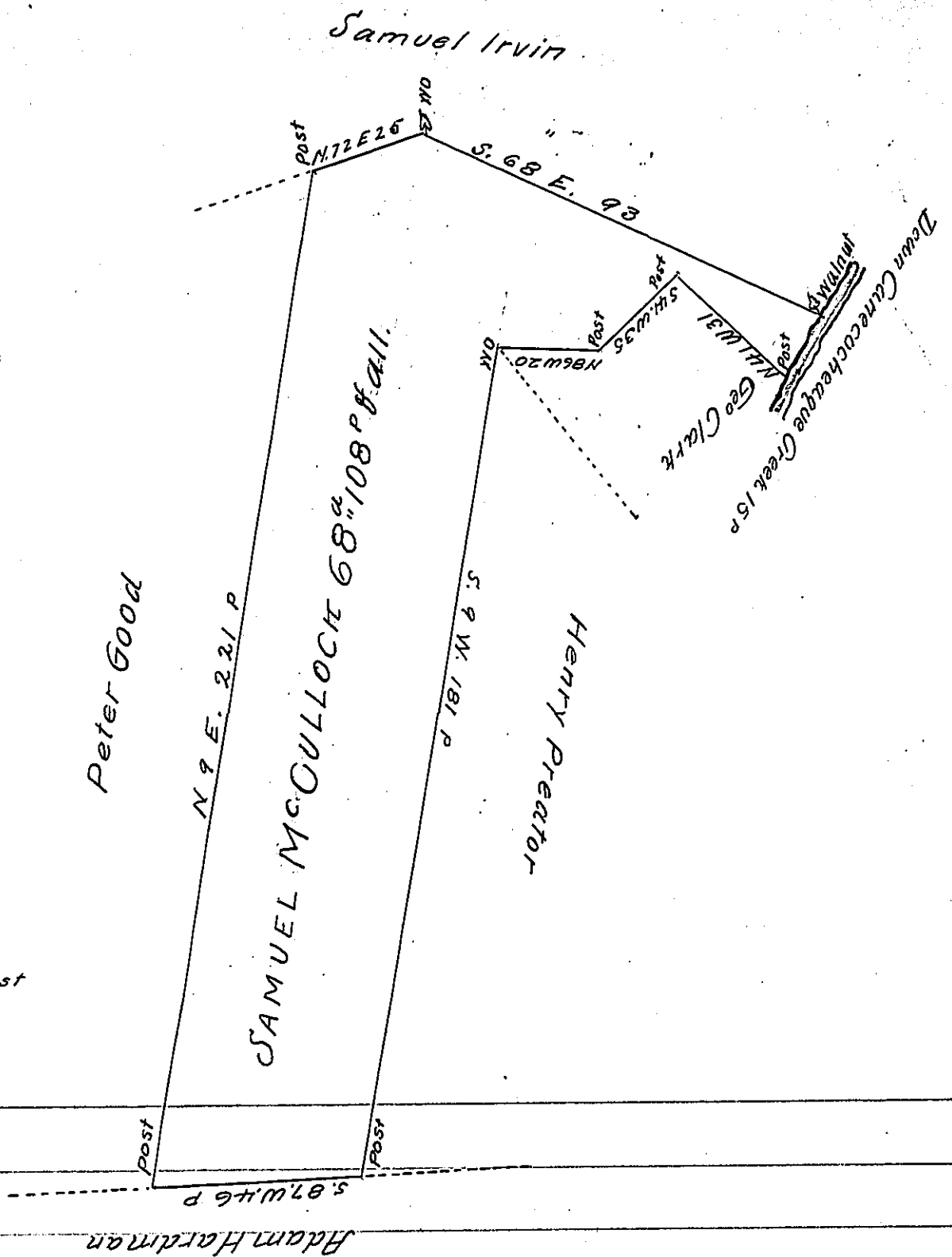


Cors'on Creek is  
S. 28. W. 15 P to the Post



Adam Hartman

A Draft of a Tract of Land situate in Peters Township in the  
County of Franklin Containing Sixty eight acres and 108 perch-  
es and the allowance of Six p Cent for roads &c.

Survey'd the 2<sup>nd</sup> day of June 1795 in pursuance of a warrant  
granted to Samuel Mc Cullock bearing date the 9<sup>th</sup> day of  
January 1793

Math<sup>w</sup> Henderson D.S.

To Daniel Brodhead Esquire  
Surveyor General of Pennsylvania.

IN TESTIMONY that the above is a copy of the original remaining on file in  
the Department of Internal Affairs of Pennsylvania, made  
conformably to an Act of Assembly approved the 16th day of  
February, 1833, I have hereunto set my Hand and caused  
the Seal of said Department to be affixed at Harrisburg,  
this sixth day of December 1905

*[Signature]*  
Secretary of Internal Affairs.